

REMUERA ROOM

FIRST FLOOR, ELLERSLIE STAND

In this room you have the option to either enjoy views of our gardens and the natural light that comes through the windows, or completely black-out it out and focus on the task at hand. This room is ideal for smaller seminars and presentations, or it works well as a break-out space for 40-100 due to its easy access to the ground and second floors. Alternatively, the in-room bar makes this a great space for dinners for up to 120 guests.



ROOM SPECIFICATIONS

Set-up style

- Theatre - 100
- Cocktail - 150
- Classroom - 70
- Banquet - 120 without dance floor
- Banquet - 100 with dance floor
- Boardroom / U-shape - 40
- Exhibition spaces - 23

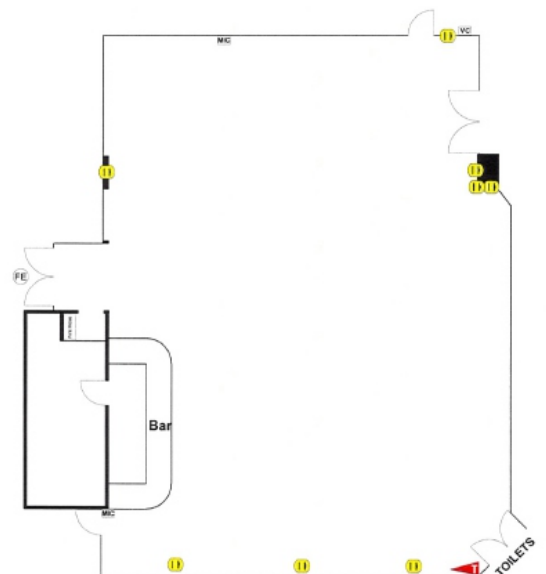
Please note: These capacities are a guide only, your set-up requirements may alter the capacities.

Dimensions

280 sqm

Ceiling height

Varies from 2.4m to 3m



To view a virtual tour please visit our website.