

GREAT NORTHERN ROOM

FIRST FLOOR, ELLERSLIE STAND

An open, mid-sized room offering garden views and the option of natural light or complete blackout. With easy access from the first and second floors, the Great Northern Room is great for seminars or as a larger space for up to 300 guests. Alternatively this room is capable of hosting up to 240 guests for a lunch or dinner.



ROOM SPECIFICATIONS

Set-up style

- Theatre - 300
- Cocktail - 350
- Classroom - 140
- Banquet - 240 without dance floor
- Boardroom / U-shape - 60
- Exhibition spaces - 30

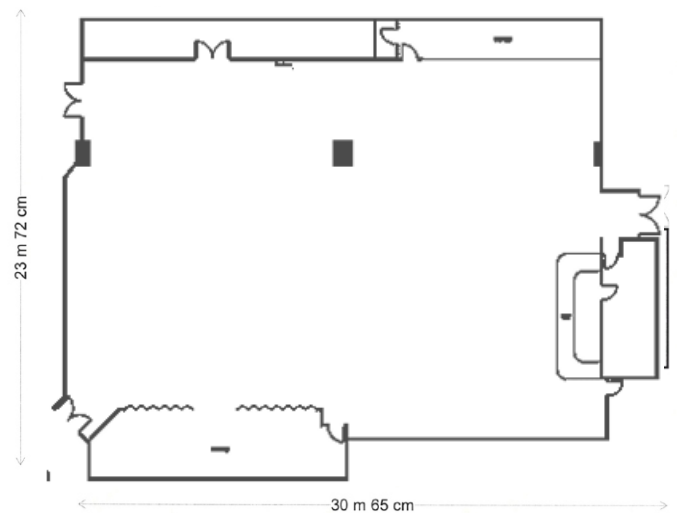
Please note: These capacities are a guide only, your set-up requirements may alter the capacities.

Dimensions

540 sqm

Ceiling height

Varies from 2.1m to 2.4m



To view a virtual tour please visit our website.